



→ Overhead Touch-Free In-Bay Automatic

TurboJet XT™



It's not about the carwash, it's about the carwash business.

 **MARK VII®**

*A truly innovative “inverted L”
from the global leader in
vehicle cleaning systems.*



TurboJet XT™

Not your average inverted L

- Separate top & side manifolds for less spray interference and reduced water consumption
- Turbo technology for better cleaning and even more water savings
- KI00 microprocessor-based controller for total flexibility when configuring wash packages
- Engineered to achieve the lowest total cost of ownership

Innovations that separate you from the competition.

Turbo technology



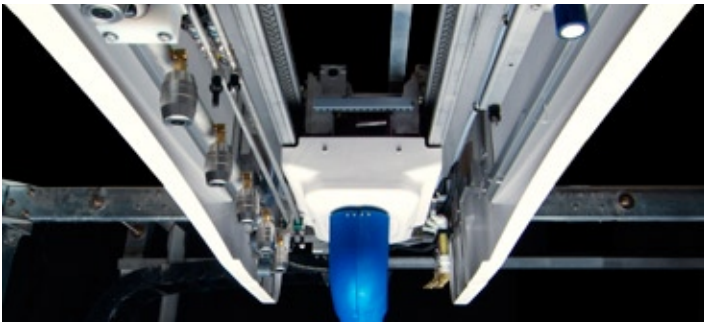
→ Mark VII is the industry leader in touch-free washing using turbo technology, which provides greater impingement on the vehicle surface while using less water than other spray systems.

Separate high pressure manifold



→ By separating top and side high pressure, the full-width top manifold can be shut off after the front-to-rear pass while the arm continues to travel around the back and sides, dramatically reducing water consumption and lowering operating costs.

Offset high pressure manifolds



→ The rotating arm is positioned in front of the top turbo nozzles to eliminate the spray interference and reduced wash quality found in other inverted L systems.

Safe, easy-to-service high pressure arm



→ The arm cover is made of safe, durable polyurethane in a clamshell design that is easy to open for servicing the nozzles, eliminating the awkward process of removing and re-installing the arm cover required to service other inverted L systems.

Mark VII turbo nozzles



→ Our unique turbo nozzles with tungsten carbide tips last 40-50% longer between rebuilds than turbo nozzles found on other touch-free systems, reducing maintenance costs and downtime.

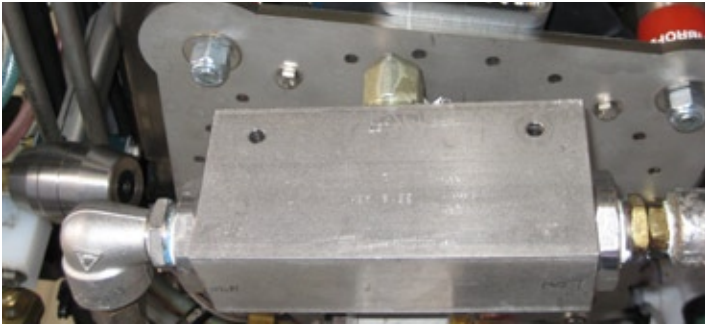
Wheel & rocker blasters



→ Two large body turbo nozzles at the bottom provide extra cleaning power on the wheels and rocker panels.

Technology to clean better and lower operating costs.

Diverter valve



→ A special Mark VII-designed changeover valve (patent pending) senses incoming pressure and directs fluid either to low pressure presoak nozzles or high pressure turbo nozzles, eliminating the need for a dual-port swivel that's an expensive replacement part on other inverted L systems.

SenseAround™



→ Unique tilt-sensing technology (patent pending) recognizes when the arm contacts a mirror, trailer hitch or other extension of the vehicle, backs up the arm, and tries again at a greater distance. Once the obstacle is cleared TurboJet XT remembers the travel pattern on subsequent passes around the vehicle.

High pressure pumping plant



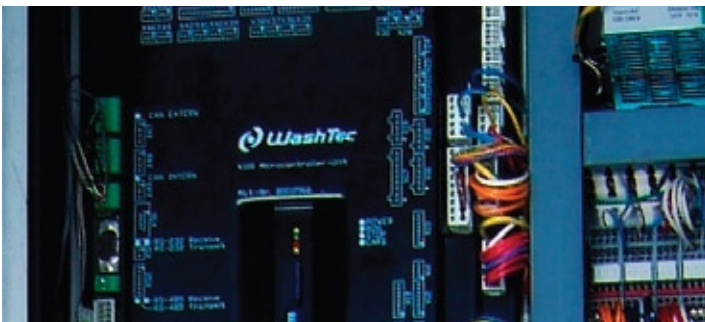
→ CAT 2530 pumping plant can be located in the equipment room or placed in the bay (space permitting) and protected with optional ABS plastic covers.

AquaDri® dryers



→ Mark VII's 30hp on-board and 30hp or 40hp freestanding dryers provide best-in-class drying results proven on thousands of Mark VII in-bay automatics.

K100 controller



→ Provides unparalleled flexibility to create wash programs and control speed to ensure optimal cleaning results and maximize choices for the customer.

Optional floor-mounted frame



→ A wall-mounted frame is standard, but for bays greater than 17 feet wide a floor-mounted aluminum frame is available.

Revenue enhancing options to boost your bottom line.

Custom branding



→ Accent panels on the front and back of the bridge covers can be custom printed with your graphics and logo to reinforce your brand to your customers.

How green is it?

	Time (min:sec)		Chemical (oz)		Water (gal)		Electricity (kW)	
	Volvo S-40	Toyota 4Runner	Volvo S-40	Toyota 4Runner	Volvo S-40	Toyota 4Runner	Volvo S-40	Toyota 4Runner
Premium Wash	3:04	3:06	3.13	3.18	32.6	33.0	0.896	0.907
Express Wash	2:19	2:21	2.13	2.18	21.6	22.0	0.655	0.665

Detailed data is available from your Mark VII representative.

Express wash: presoak, high pressure wash, wax, spot free rinse

Premium wash: undercarriage [not included in wash time], presoak, high pressure wash, triple foam, high pressure rinse, wax, spot free rinse

→ We share our numbers and let you decide for yourself. We're confident you'll find that the TurboJetXT is as energy efficient and cost effective to operate as any touch-free rollover system on the market.

Triple-foam conditioner



→ Customers love the colorful display and scent provided by tri-color foamed chemicals used to enhance the cleaning process and are willing to pay more for wash packages that include them.

Premium wax system



→ When combined with the typical clearcoat and spot free rinse applications, the premium wax system enables the use of chemicals such as Rain-X® and LustraShield™ to provide extended protection on all vehicle surfaces while driving incremental revenue for the carwash operator.

Dimensions:

- Height without on-board dryer: 125.1" / 317.8cm
- Height with on-board dryer: 130.6" / 331.8cm
- Track Width: 151.5" / 384.8"
- Bridge Width: 154.0" / 391.2cm
- Bridge Depth: 36.4" / 92.5cm
- Dryer Depth: 30.0" / 76.2cm

Vehicle Clearance:

- Height: 90.6" / 230.1cm
- Width: 137.0" / 348.0cm

Bay Size:

- Minimum Height for on-board dryer: 138.0" / 350.5cm
- Minimum Height without on-board dryer: 132.0" / 335.3cm
- Minimum Width: 175.0" / 444.5cm
- Minimum Length: 28.0' / 8.5m
- Maximum Vehicle Length without on-board dryer: track length minus 48.0" / 121.9cm
- Maximum Vehicle Length with on-board dryer: track length minus 114.0" / 289.6cm

Utilities:

- Electrical: 208-230VAC 60Hz 3Ø, 75 amp without dryer
- Electrical: 208-230VAC 60Hz 3Ø, 125 amp with 30hp on-board dryer
- Minimum Water Pressure: 50 PSI / 3.5 bar
- Maximum Water Pressure: 80 PSI / 5.5 bar
- Minimum Water Demand: 20 GPM / 76 LPM
- Minimum Air Supply: ½" line with 80 PSI / 5.5 bar
- Maximum Air Supply: 150 PSI / 10.3 bar
- Air Consumption Demand: Constant 1 CFM / 28 LPM
Intermittent 3 CFM / 85 LPM
Triple foam 25 CFM / 708 LPM

Mark VII + WashTec: Your ideal business partners.



Mark VII is the U.S. subsidiary of WashTec AG, the world's leading supplier of vehicle washing equipment. Headquartered in Augsburg, Germany, WashTec sells equipment in over 60 countries. Our technology is used to wash over two million vehicles daily in over 30,000 rollovers, 1,400 tunnels and 2,650 commercial vehicle washes worldwide.

Mark VII's products and services include:

- AquaJet XT® touch-free rollover
- SoftWash XT® soft-touch rollover
- TurboJet XT™ touch-free overhead/inverted L
- SoftLine® soft-touch, touch-free and hybrid tunnel
- JetWash™ self-serve
- AquaFlex® chemicals
- Ancillary products (entry systems, water treatment systems, etc.)
- Site selection assistance
- Custom site and bay layouts
- Service contracts
- Technical support
- Wash bay refurbishing



© 2010 Mark VII Equipment Inc. Specifications are subject to change without notice. WashTec AG of Germany is not affiliated with Integrated Services Inc., which markets a tunnel controller product in the U.S. under the trademark WashTEC. Rain-X is a trademark of Ecolab Inc. LustraShield is a trademark of Cleaning Systems Inc.

Mark VII Equipment Inc.
5981 Tennyson Street
Arvada, CO 80003

Phone: 800.525.8248 or 303.423.4910
Fax: 303.430.0139
Email: markvii@markvii.net
Web: www.markvii.net